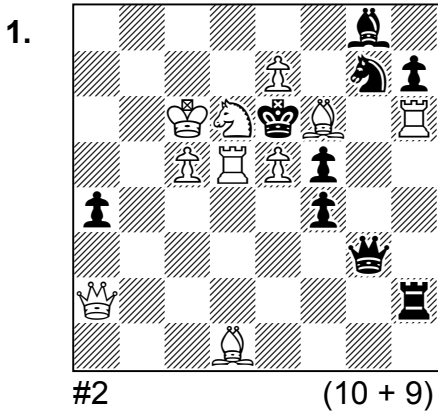


31st World Chess Solving Championship

Rhodes, 16th-17th October, 2007

Round 1 solutions: 3 x #2

Touw Hian Bwee
Problem, 1963

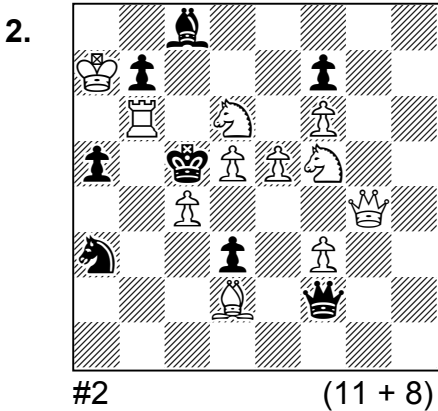


1. ♖g4? (2. ♖h4#) 1... ♗f7!
 1. ♗h5? (2. ♗g5#) 1... ♘e8!
 1. ♗c2, ♗e2? (2. ♗d3#) 1... ♗g2!

1. ♗f3! (5)
 (2. ♗d2#)

1... ♗c2, ♗b2, ♗xa2 2. ♗g5#
 1... ♗xf3 2. ♗h4#

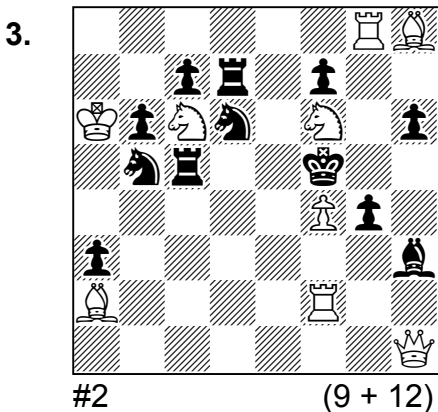
Gilbert S Dobbs
La Stratégie, 1907



1. ♗d4! (5)
 (2. ♗b3#)

1... ♗xd4 2. ♗xc8#
 1... ♗xc4 2. ♗b5#
 1... ♗b5+ 2. ♗xb5#
 1... a4 2. ♗b4#

Tony Lewis
Chess, 1952



1... ♗~ 2. ♗h5#
 1... g3 2. ♗xh3#
 1... ♗d~ 2. ♗(x)e4#

1. ♗d1! (5)

1... ♗~ 2. ♗xg4#
 1... g3 2. ♗h5#
 1... ♗d~ 2. ♗xd7#
 1... ♗c~ 2. ♗(x)d5#
 1... ♗e5 2. fxe5#
 1... ♗b~ 2. ♗(x)d4#
 1... h5 2. ♗g5#
 1... ♗d~ 2. ♗(x)e7#